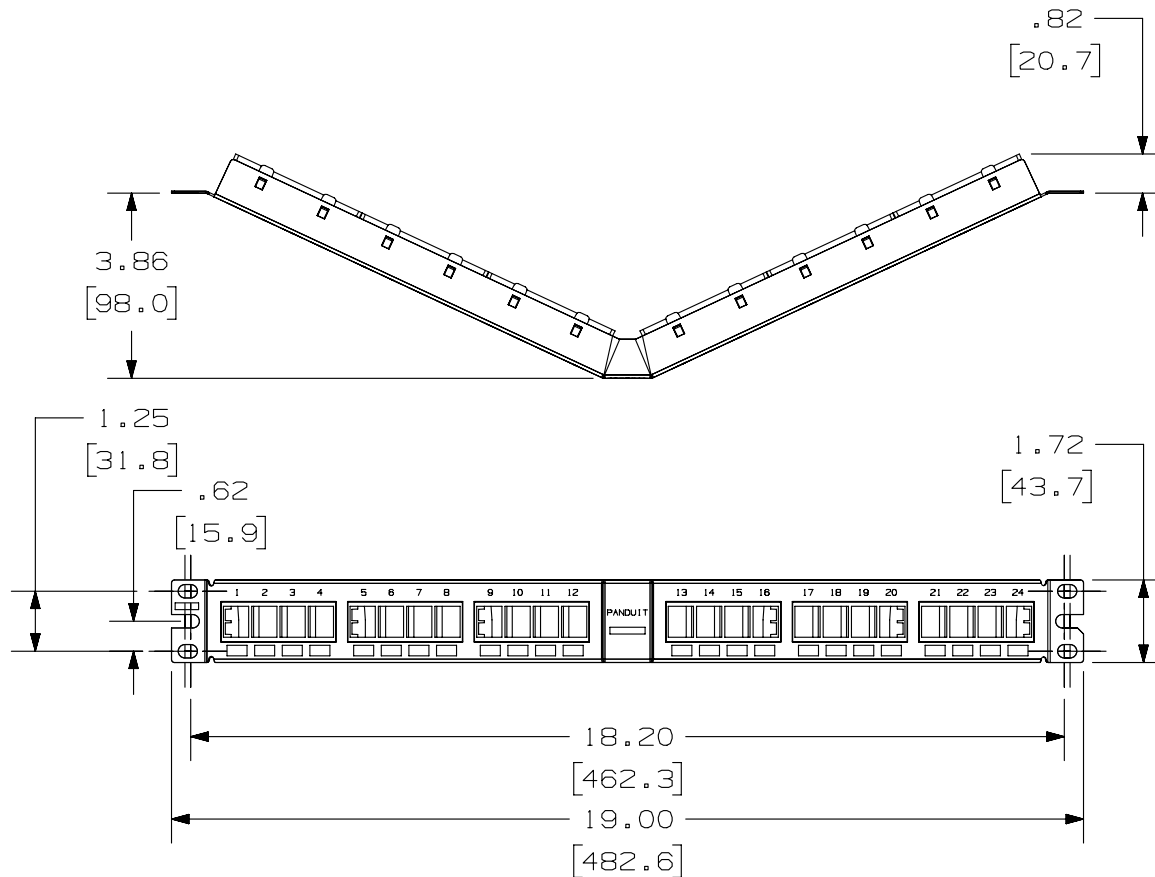


2

1

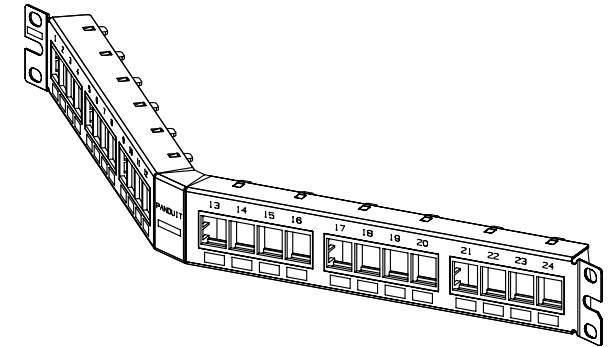
THIS COPY IS PROVIDED ON A RESTRICTED BASIS AND IS NOT TO BE USED IN ANY WAY DETRIMENTAL TO THE INTERESTS OF PANDUIT CORP.



PANDUIT P/N	WEIGHT
NKPPA24FMY	8.05 LB/10 PCS (3653.6 g/10 PCS)

NOTES:

- SEE CURRENT CATALOG FOR VARIOUS APPLICATIONS WITH THIS WIRING SYSTEM.
- THE FLUSH MOUNT PATCH PANEL IS DESIGNED FOR MOUNTING TO 19" UNIVERSAL RACKS.
- PACKAGE CONTENTS:
 - (1) -24 PORT ANGLED STAMPING
 - (6) -4 POSITION FACEPLATE (ASSEMBLED TO PANEL)
 - (1) -SCREW KIT (INCLUDES FOUR #12-24 SCREWS)
 - (1) -SCREW KIT (INCLUDES FOUR M6 SCREWS)
- DIMENSIONS IN PARENTHESIS ARE IN METRIC.



A

PART NUMBER		NKPPA24FMY	
TITLE		NETKEY ANGLED 24 PORT FLUSH MOUNT MODULAR PATCH PANEL	
ITEM REVISION NAME		CUSTOMER DRAWING	
DATASET FILE NAME		M02479D0_01	
MATERIAL:		STAMPING: 20 GAGE C.R.S. FACEPLATE: ABS	
DRAWING NUMBER:		02479-095	
UNLESS OTHERWISE SPECIFIED, DIMENSIONAL TOLERANCES ARE: IN [mm]		THIRD ANGLE PROJECTION	
.X ±		.XXX ± .010 [.3]	
.XX ± .03 [.8]		ANGLES ±	
DRAWN BY		SCALE	
JSP		NONE	
DATE		SHT 1 OF 1	
4-19-06		A	
CHK		SIZE	
MJD		A	

REV	DATE	BY	CHK	APR	DESCRIPTION	ECN
1	5-20-14	MDJR	REFR	JCK	A. UPDATED TITLE BLOCK.	02479-095
R	4-19-06	JSP	MJD	MJD	RELEASED TO PRODUCTION	02479-095

2

1

D10100DA/14

Mouser Electronics

Authorized Distributor

Click to View Pricing, Inventory, Delivery & Lifecycle Information:

Panduit:

[NKPPA24FMY](#)