

YF Series

Typical Applications

- **Multi-pole and multi-position**

- **Positive detent**

- **Low level and power capability**

- **Computer servers**

- **Point-of-sale terminals**

- **Cash registers**



Models Available

Materials

LOCK: Zinc alloy with stainless steel facing. 4 tumbler, single bitted lock with integral detent mechanism.

KEYS: Two nickel plated brass keys with code number.

SWITCH HOUSING: 6/6 Nylon (UL 94V-2).

CONTACTS & TERMINALS: Q contact material: Copper, silver plated.
See page L-14 for additional contact materials.

MOUNTING NUT: Brass, bright zinc plated.

TERMINAL SEAL: Epoxy.

NOTE: Specifications and materials listed above are for switchlocks with standard options. For information on specific and custom switchlocks, consult Customer Service Center.

To order, simply select desired option from each category and place in the appropriate box. Available options are shown and described on pages L-12 through L-14. For additional options not shown in catalog, consult Customer Service Center.



YF0113 SP, 90° Index, keypull pos. 1

YF2113 DP, 90° Index, keypull pos. 1

YF011U SP, 90° Index, keypull pos. 1 & 2

YF211U DP, 90° Index, keypull pos. 1 & 2

Keying

2 Two nickel plated brass keys

Lock Type

C 4 Tumbler, single bitted lock with detent

Lock Finish

2 Stainless steel facing

8 Gloss black facing

Terminations

03 Solder lug with hole

WC Wire lead

Mounting Style

N With nut

Contact Material

Q Silver

B Gold



Switchlock

YF Series

4 Tumbler Miniature Switchlocks

SWITCH AND LOCK FUNCTION

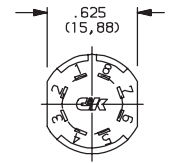
SINGLE & DOUBLE POLE SWITCHES							
NO. POLES	MODEL NO.	CONNECTED TERMINALS			KEY PULL POSITIONS	LOCK CONFIGURATION	INDEXING
		POS. 1	POS. 2	POS. 3			
SP DP	YF0113 YF2113	8-1 8-1, 4-5	1-3 1-3, 5-7		Position 1		90°
SP DP	YF011U YF211U	8-1 8-1, 4-5	1-3 1-3, 5-7		Positions 1 & 2		

All models with all options when ordered with 'Q' contact material.

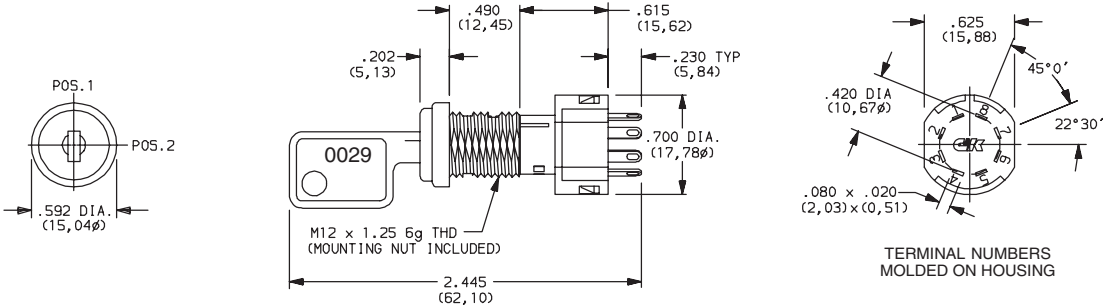
LEGEND

- = Detent Positions (45° or 90°)
- ⊙ = Key pull possible in these positions.
- ⦿ = Stop Positions

TERMINAL NUMBERS



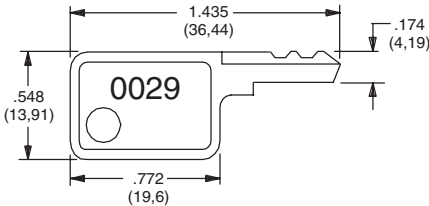
Terminal numbers molded on bottom of housing.



Part number shown: YF01132C203NQ

KEYING

2 TWO NICKEL PLATED BRASS KEYS



Key Part Number: 960B10029

NOTE: All orders keyed alike with code number on key. For more than one key code, replacement keys, or other special features, consult Customer Service Center.



Dimensions are shown: Inch (mm)

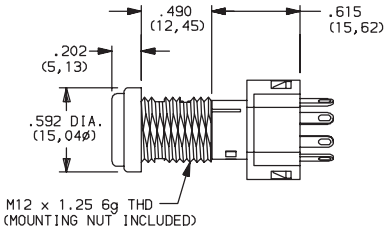
Specifications and dimensions subject to change



YF Series 4 Tumbler Miniature Switchlocks

LOCK TYPE

C 4 TUMBLER, SINGLE BITTED LOCK WITH DETENT



LOCK FINISH

2 STAINLESS STEEL FACING

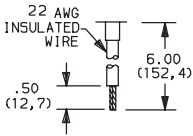
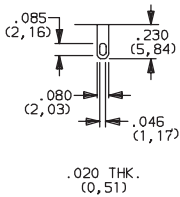
8 GLOSS BLACK FACING



TERMINATIONS

03 SOLDER LUG WITH HOLE

WC WIRE LEAD



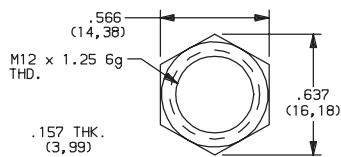
Black wire standard, other colors and lengths available, consult Customer Service Center. UL style 1015.



Switchlock

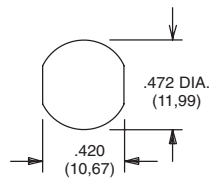
YF Series 4 Tumbler Miniature Switchlocks

N WITH NUT



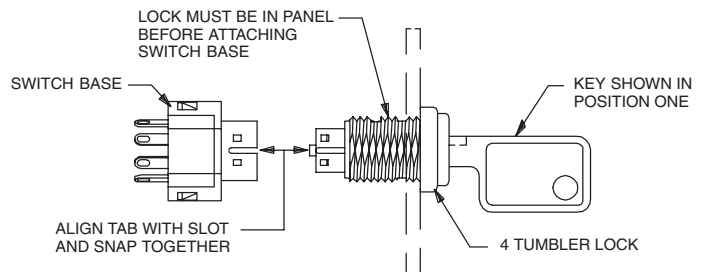
Nut part number: 1790901A47

PANEL MOUNTING



Panel thickness:
.300 (7,62) max.

Switch and Lock Assembly Instructions



NOTE: Switch installation is permanent. Switch cannot be removed from lock after assembly. Attempts to separate switch and lock may damage switch.

OPTION CODE	RoHS COMPLIANT*	RoHS COMPATIBLE*	CONTACT AND TERMINAL MATERIAL	RATING	
Q	YES	YES	SILVER ²	POWER	4 AMPS @ 125 V AC or 28 V DC; 2 AMPS @ 250 V AC (UL/CSA).
B	YES	YES	GOLD ¹	LOW LEVEL/DRY CIRCUIT	0.4 VA MAX. @ 20 V AC or DC MAX.

* Note: See Technical Data section of this catalog for RoHS compliant and compatible definitions and specifications.

¹ CONTACTS & TERMINALS: Copper, with gold plate over nickel plate.

² CONTACTS & TERMINALS: Copper, silver plated (standard with all termination options).

All models **CALUS** with all options when ordered with 'Q' contact material.

AVAILABLE HARDWARE



Key Code: 0029

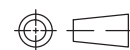
PART NO. (ONE KEY)

960B10029

Material: Brass
Finish: Nickel plate

Finish: Nickel plate

Switchlock



Third Angle Projection

Dimensions are shown: Inch (mm)

Specifications and dimensions subject to change