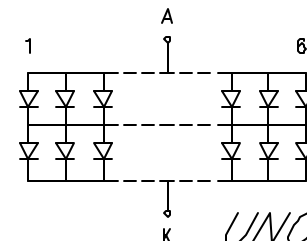


| ELECTRO-OPTICAL CHARACTERISTICS $T_A = 25^\circ\text{C}$ PER MODULE | | | | | $I_f = 600\text{mA}$ |
|---|----------------|-----|-----|-----------------|------------------------|
| PARAMETER | MIN | TYP | MAX | UNITS | TEST COND |
| PEAK WAVELENGTH | | 590 | | nm | |
| FORWARD VOLTAGE | | 4.2 | 4.5 | V_f | |
| REVERSE VOLTAGE | 8 | | | V_r | $I_r = 700\mu\text{A}$ |
| LUMINOUS INTENSITY | | 690 | | cd/m^2 | $I_f = 660\text{mA}$ |
| EMITTED COLOR: | SUPER YELLOW | | | | |
| REFLECTOR FINISH: | WHITE DIFFUSED | | | | |

LIMITS OF SAFE OPERATION AT 25°C PER MODULE

| PARAMETER | MAX | UNITS |
|--|------------|----------------------|
| STEADY CURRENT | 1056 | mA |
| POWER DISSIPATION | 4.75 | W |
| DERATE FROM 25°C PER DIE | -1.2 | mW/ $^\circ\text{C}$ |
| OPERATING TEMP. | -40 TO +85 | $^\circ\text{C}$ |
| STORAGE TEMP. | -40 TO +85 | $^\circ\text{C}$ |
| SOLDERING TEMP. | +260 | $^\circ\text{C}$ |
| 2.0mm FROM BODY | 3 SEC. MAX | |



UNCONTROLLED DOCUMENT

*UNLESS OTHERWISE SPECIFIED TOLERANCES PER DECIMAL PRECISION ARE: X=±1 (±0.039), XX=±0.5 (±0.020), XXX=±0.25 (±0.010), XXXX=±0.127 (±0.005). LEAD SIZE=±0.05 (±0.002), LEAD LENGTH=±0.75 (±0.030), MIN=+0.00 DECIMAL PRECISION MAX=+0.00 DECIMAL PRECISION

REV.

PART NUMBER

SSB-COB13340SYW-B

133mm x 40mm V.A. SUPER YELLOW LED BACKLIGHT,
 CHIPS ON BOARD, 132 CHIPS, 4.2V @ 660mA

CONFIDENTIAL INFORMATION

THE INFORMATION CONTAINED IN THIS DOCUMENT IS THE PROPERTY OF LUMEX INC. EXCEPT AS SPECIFICALLY AUTHORIZED IN WRITING BY LUMEX INC., THE HOLDER OF THIS DOCUMENT SHALL KEEP ALL INFORMATION CONTAINED HEREIN CONFIDENTIAL AND SHALL PROTECT SAME IN WHOLE OR IN PART FROM DISCLOSURE AND DISSEMINATION TO ALL THIRD PARTIES.

RELIABILITY NOTE

OUR MANY YEARS OF EXPERIENCE DATA ACCUMULATION INDICATE THAT SOLDER HEAT IS A MAJOR CAUSE OF EARLY AND FUTURE FAILURE. PLEASE PAY ATTENTION TO YOUR SOLDERING PROCESS.



290 E. HELEN ROAD
 PALATINE, IL 60067-6976
 PHONE: +1.847.359.2790
 US WEB: www.lumex.com
 TW WEB: www.lumex.com.tw

DRAWN BY:

JD

CHECKED BY:

APPROVED BY:

DATE: 7.13.04

PAGE: 1 OF 1

SCALE: N/A

Mouser Electronics

Authorized Distributor

Click to View Pricing, Inventory, Delivery & Lifecycle Information:

Lumex:

[SSB-COB13340SYW-B](#)