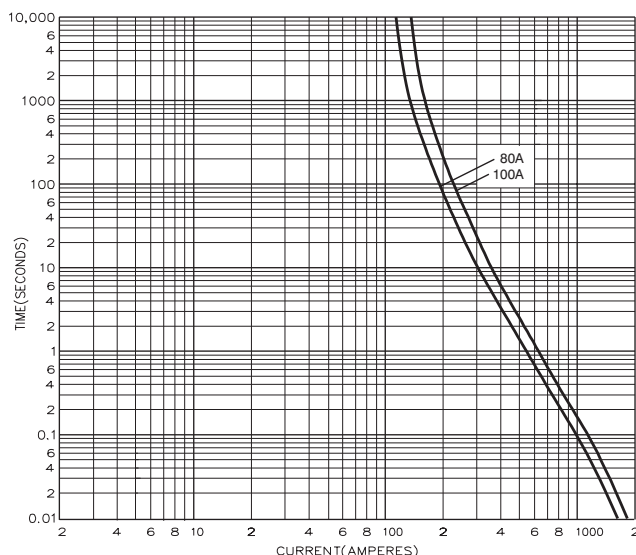
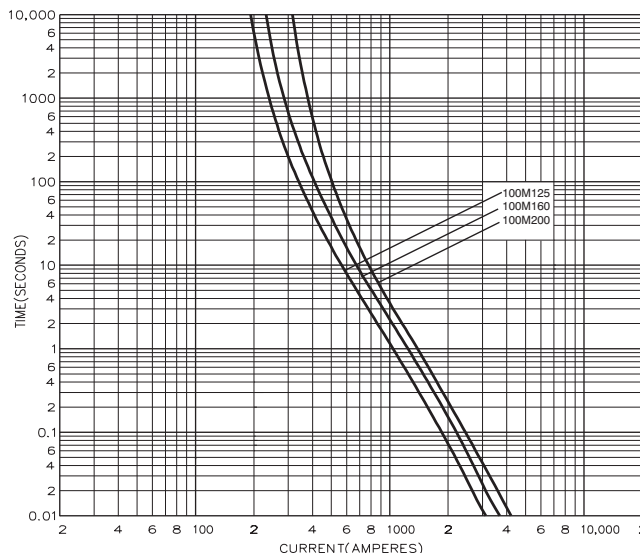


BS88, IEC269 Industrial HRC Fuse Links

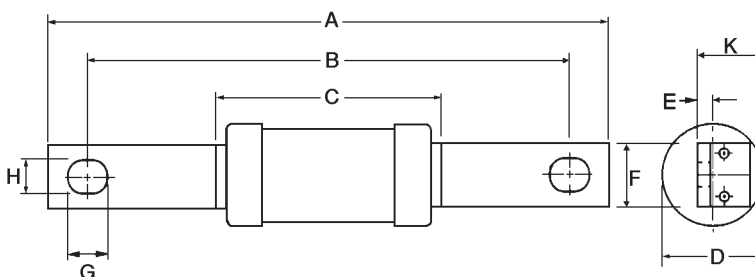
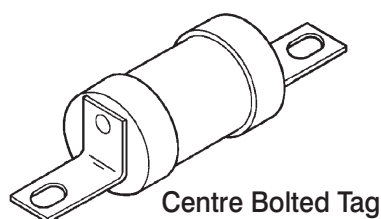
Centre Bolted Tags 550V ac and 415V ac

CD

Time-Current Characteristic Curves

Non Motor Rated

Motor Rated


Dimensional Data



Catalog Number	I ² t (Amps ² Seconds)			Nom. Watts Loss	Rated Voltage	Dimensions (mm)								
	Amp Ratings	Pre-Arcing	Total at 415V			A	B	C	D	E	F	G	H	K
CD80	80	13,000	35,200	7.2	550 ac	126.0	111.0	58.6	21.0	3.2	14.3	11.1	8.7	19.5
CD100	100	25,000	76,500	8.5					26.0					22.5
CD100M125	100M125	57,000	150,000	11	415 ac	136.0	111.0	47.0	31.0	19.0	12.5	12.5	12.5	12.5
CD100M160	100M160	72,500	190,000	13					31.0					
CD100M200	100M200	120,000	290,000	14					31.0					

Packaging - 10 per carton

This bulletin is intended to clearly present comprehensive product data and provide technical information that will help the end user with design applications. Bussmann reserves the right, without notice, to change design or construction of any products and to discontinue or limit distribution of any products. Bussmann also reserves the right to change or update, without notice, any technical information contained in this bulletin. Once a product has been selected, it should be tested by the user in all possible applications.

Bussmann Division
Cooper (U.K.) Ltd
 Burton-on-the-Wolds
 Leicestershire, LE12 5TH
 United Kingdom
 Tel: (44) (0)1509 88 27 37
 Fax: (44) (0)1509 88 27 86

Head Office
 St. Louis, MO, U.S.A. Tel: (314) 527-3877 Fax: (800) 544-2570 International Fax: (314) 527-1445



Bussmann Information Fax (00 1) 314 527 1450
 Bussmann WEB site - <http://www.bussmann.com>

A **COOPER** Industries Company

CD 03.98
 Doc. No. 4116

Mouser Electronics

Authorized Distributor

Click to View Pricing, Inventory, Delivery & Lifecycle Information:

Eaton:

[CD100](#) [CD100M125](#) [CD100M160](#) [CD100M200](#) [CD80](#)