



SIRIUS POSITION SWITCH 3SE5162,  
METAL ENCLOSURE XL, 56MM WIDE WITH TWIST LEVER  
27MM,  
FROM METAL AND PLASTIC ROLLER 19MM DEVICE  
CONNECTION 3X(M20X1.5),  
2X (1NO/1NC ) SNAP-ACTION CONTACTS;  
IP66/ IP67

### Manufacturer article number

- of the basic unit included in the scope of supply
- of the actuator head for position switches included in the scope of supply
- of the operating lever included in the scope of supply

[3SE5162-0CA00](#)

[3SE5000-0AH00](#)

[3SE5000-0AA01](#)

### General technical details:

#### product designation

standard position switch

#### Explosion protection category for dust

none

#### Insulation voltage

- rated value

V

400

#### Degree of pollution

class 3

#### Thermal current

A

10

#### Operating current

- at AC-15
  - at 24 V / rated value
  - at 125 V / rated value
  - at 230 V / rated value
  - at 400 V / rated value
- at DC-13
  - at 24 V / rated value
  - at 125 V / rated value

A

6

A

8

A

6

A

4

A

6

A

0.55

• at 230 V / rated value	A	0.27
• at 400 V / rated value	A	0.1
<b>Continuous current</b>		
• of the slow DIAZED fuse link	A	6
• of the quick DIAZED fuse link	A	10
• of the C characteristic circuit breaker	A	1
<b>Mechanical operating cycles as operating time</b>		
• typical		5,000,000
<b>Electrical operating cycles as operating time</b>		
• with contactor 3RH11, 3RT1016, 3RT1017, 3RT1024, 3RT1025, 3RT1026 / typical		5,000,000
• at AC-15 / at 230 V / typical		100,000
<b>Electrical operating cycles in one hour</b>		
• with contactor 3RH11, 3RT1016, 3RT1017, 3RT1024, 3RT1025, 3RT1026		6,000
<b>Repeat accuracy</b>	mm	0.05
<b>Design of the contact element</b>		snap-action contacts
<b>Number of NC contacts</b>		
• for auxiliary contacts		2
<b>Design of the switching function</b>		positive opening
<b>Number of NO contacts</b>		
• for auxiliary contacts		2
<b>Resistance against vibration</b>		0.35 mm / 5g
<b>Resistance against shock</b>		30g / 11 ms
<b>Ambient temperature</b>		
• during operating	°C	-25 ... +85
• during storage	°C	-40 ... +90
<b>Width of the sensor</b>	mm	56
<b>Material</b>		
• of the enclosure		metal
<b>Material / of the housing / of the switch head</b>		metal
<b>Design of the operating mechanism</b>		metal lever, 27 mm long, step 9 mm, plastic roller 19 mm
<b>Actuating speed</b>	mm/s / m/s	0.1 ... 1.5
<b>Protection class IP</b>		IP66/IP67
<b>mounting position</b>		any
<b>Cable gland version</b>		3 x (M20 x 1.5)
<b>Design of the electrical connection</b>		screw-type terminals
<b>Item designation</b>		
• according to DIN 40719 extendable after IEC 204-2		S

- according to DIN EN 61346-2

B

#### Certificates/approvals:

##### General Product Approval



CCC



GOST



UL



VDE



EG-Konf.

##### Declaration of Conformity

##### Test Certificates

[Special Test Certificate](#)

##### other

[Confirmation](#)

#### Further information:

##### Information- and Downloadcenter (Catalogs, Brochures,...)

<http://www.siemens.com/industrial-controls/catalogs>

##### Industry Mall (Online ordering system)

<http://www.siemens.com/industrial-controls/mall>

##### CAX-Online-Generator

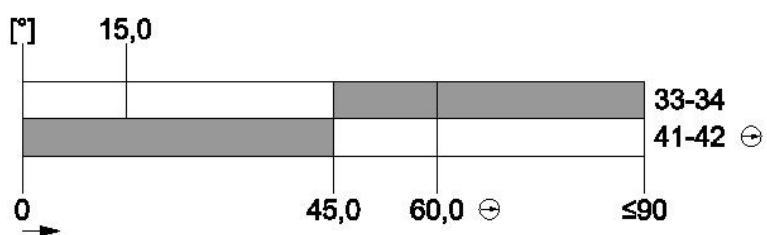
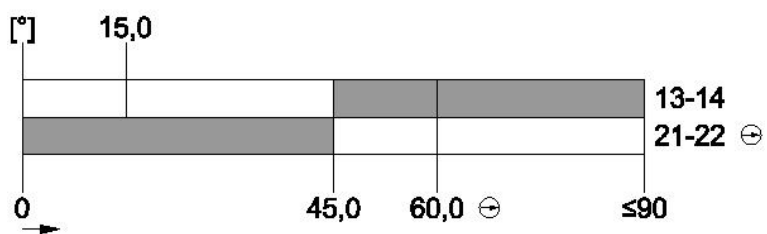
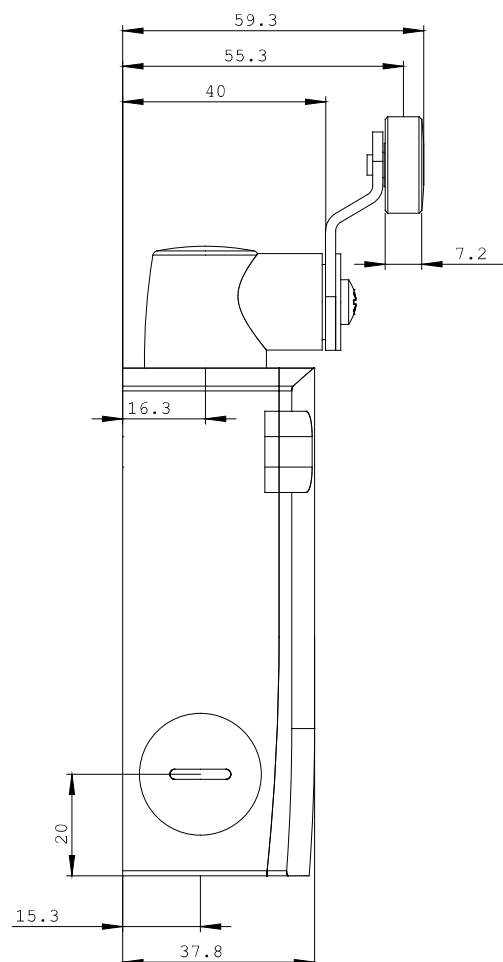
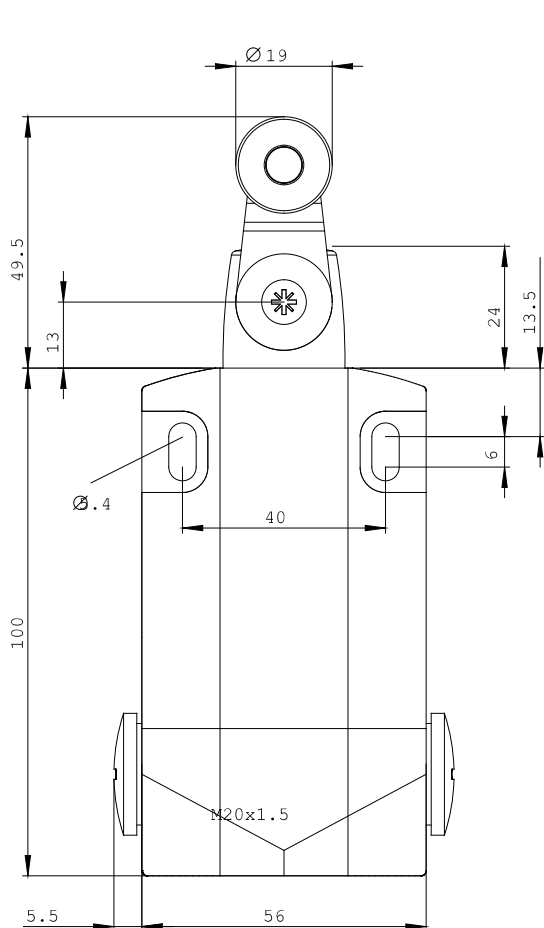
<http://www.siemens.com/cax>

##### Service&Support (Manuals, Certificates, Characteristics, FAQs,...)

<http://support.automation.siemens.com/WW/view/en/3SE5162-0CH01/all>

##### Image database (product images, 2D dimension drawings, 3D models, device circuit diagrams, ...)

[http://www.automation.siemens.com/bilddb/cax\\_en.aspx?mlfb=3SE5162-0CH01](http://www.automation.siemens.com/bilddb/cax_en.aspx?mlfb=3SE5162-0CH01)



last change:

Oct 2, 2012