

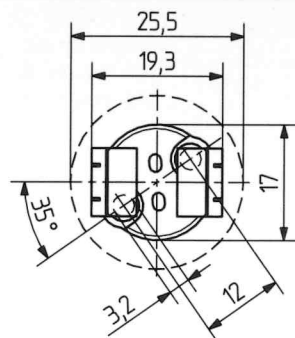
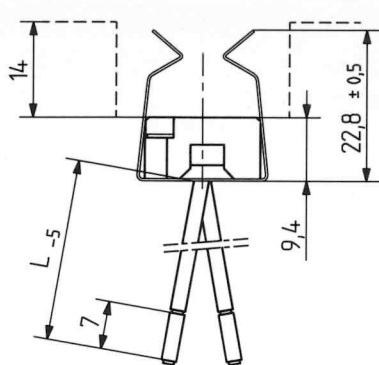


- **UL** File: E-93328
- Housing: ceramic
- Wires: Cu, nickel plated, 1.0 mm², insulation: PTFE (max. 250° C), with ferrule rear cable entry
- The method of wiring must be such that no stress or bending motions will be transferred to the contacts, thus reducing the contact / pressure on the lamp pins.

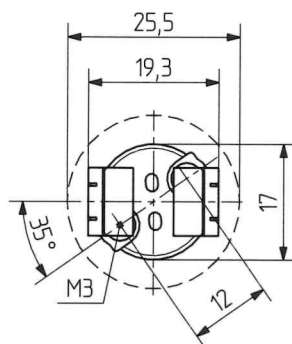
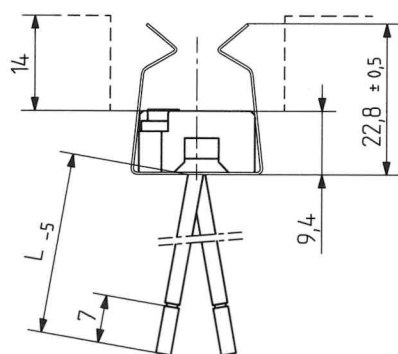
T240



519



	pkg.	wt.	part no.
Screw mount, 12 mm centers			
lead length: 80 mm	500	7g	25.105.6103.00
130 mm	500	8g	25.105.6105.00
250 mm	500	9g	25.105.6101.00
360 mm	500	10g	25.105.6102.00
450 mm	500	11g	25.105.6104.00



Screw mount, Thread inserts M 3	500	8g	25.105.6201.00
--	-----	----	----------------

Mouser Electronics

Authorized Distributor

Click to View Pricing, Inventory, Delivery & Lifecycle Information:

[BJB Electric:](#)

[25.105.6201.00](#)