



Transform your LC patchcord into an environmental connector.

The LC Field offers an easy system to upgrade from a standard to an environment LC.

- Sealed against fluids and dust (IP68)
- Shock, Vibration proof
- No cabling operation in field and no tools required for installation (except 1.6mm and 2mm zipcord cable)

With the patented RJStop system you can use a standard LC patchcord in a metallic plug which will protect it from shocks, dust and fluids.

No hazardous on-field cabling!

APPLICATIONS:

- Railways
- Base Station
- Military Communication
- Navy

MECHANICAL CHARACTERISTICS

- Number of Channels: 2
- Typical Insertion Loss: 0.5db in MM and SM
- Durability 500 mating/unmating cycles (changes for <0.2db)

PART NUMBER CONFIGURATIONS

| Serie | LCF TV | 6M | D | G | N |
|---|---|----|---|---|---|
| Optical connector type | | | | | |
| Shell Type | | | | | |
| 6M: | Plug with metal backshell and metal PG clamp | | | | |
| 2: | Square flange receptacle without backshell | | | | |
| 7: | Jam nut receptacle without backshell | | | | |
| Cable Type | | | | | |
| Only for plug | | | | | |
| D: | Flat duplex cable 1,6 mm | | | | |
| E: | Duplex zipcord 1,6 mm | | | | |
| F: | Flat duplex cable 2 mm | | | | |
| G: | Duplex zipcord 2 mm | | | | |
| H: | Flat duplex cable 2,8 mm | | | | |
| I: | Duplex zipcord 2,8 mm | | | | |
| T: | Flat duplex cable + Duplex zipcord for 1,6 mm - 2 mm - 2,8 mm | | | | |
| Only for receptacle (no backshell available for receptacle) | | | | | |
| 0: | Receptacle without backshell | | | | |
| Shell Finish | | | | | |
| N: | Nickel plated | | | | |
| G: | Olive drab cadmium plated | | | | |
| B: | Bronze | | | | |
| D: | Black zinc cobalt | | | | |
| Z: | Olive drab zinc cobalt | | | | |
| Polarization | | | | | |
| N: | Normal | | | | |
| A / B / C / D / E | | | | | |

| Cap Series | B | EC | N | TV | W | 19 |
|--|--|----|---|----|---|----|
| Protective cap type | | | | | | |
| EC: | For square flange receptacle | | | | | |
| ER: | For jam nut receptacle | | | | | |
| F: | For plug | | | | | |
| Wire type | | | | | | |
| N: | Nylon cord | | | | | |
| Blank: | Metallic chain | | | | | |
| TV: | Series | | | | | |
| Shell finish | | | | | | |
| B: | Bronze | | | | | |
| F: | Electroless nickel plated, aluminium version | | | | | |
| W: | Olive drab cadmium plated, aluminium version | | | | | |
| D: | Black zinc cobalt | | | | | |
| Z: | Olive drab zinc cobalt | | | | | |
| Corresponding connector shell size: 19 | | | | | | |

■ Requested information to order LC Field Patchcord

Type of connector: Male /Female
 Type of fiber: 50/125, 62,5/125, 9/125
 Patchcord length: ex 10.5m
 Drawing: description of the product

Contact us for other configuration

Tools informations:

Mounting Tools:

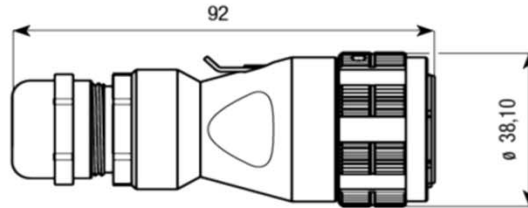
LCFTV MO TOOL: LC FIELD Mounting tools

Dismounting Tools:

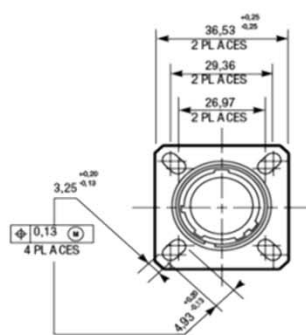
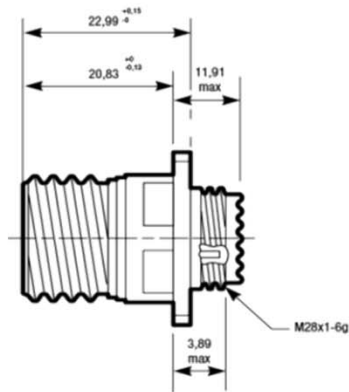
LCFTV DM TOOL: LC FIELD Dismounting tools
 (To dismount the LC you need to use both dismounting and mounting tools)

Line drawings (Dimensions in mm)

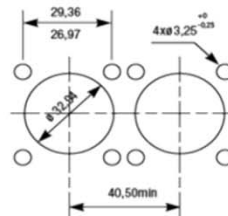
■ Plug (MIL DTL 38 999 series III Size 19)



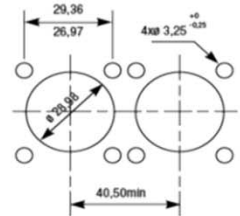
■ Square Flange Receptacle (MIL DTL 38 999 series III Size 19)



Square flange receptacle rear panel mounting

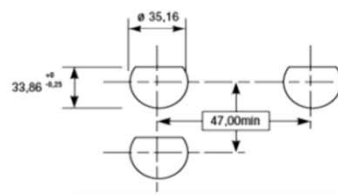
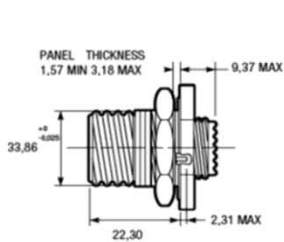


Square flange receptacle front panel mounting



Panel Drilling

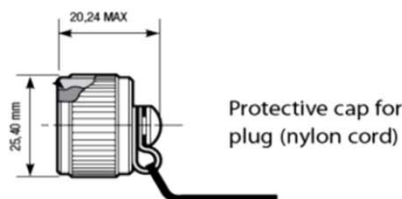
■ Jam Nut Receptacle (MIL DTL 38 999 series III Size 19)



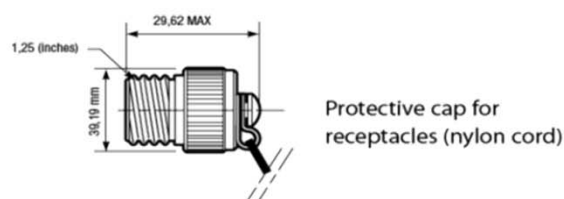
Jam nut receptacle rear panel mounting

Panel Drilling

Protective caps



Protective cap for plug (nylon cord)



Protective cap for receptacles (nylon cord)

Amphenol Fiber Systems International, Inc.
1300 Central Expressway North, Suite 100, Allen, TX 75013
Phone: 214.547.2400 800.472.4225 Fax: 214.547.9344

Mouser Electronics

Authorized Distributor

Click to View Pricing, Inventory, Delivery & Lifecycle Information:

[Amphenol:](#)

[LCFTV70NN](#) [LCFTV70GN](#) [LCFTV6MGNN](#) [LCFTV20NN](#) [LCFTV6MGGN](#) [LCFTV20GN](#)