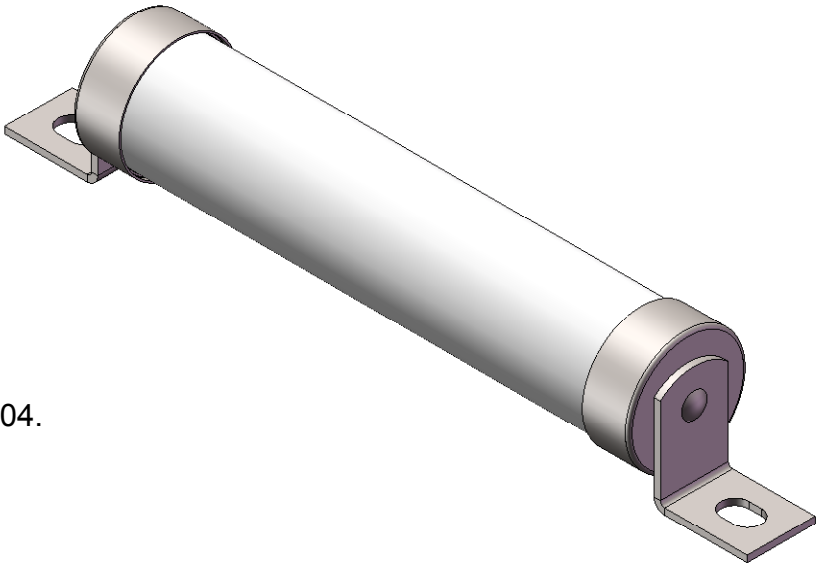
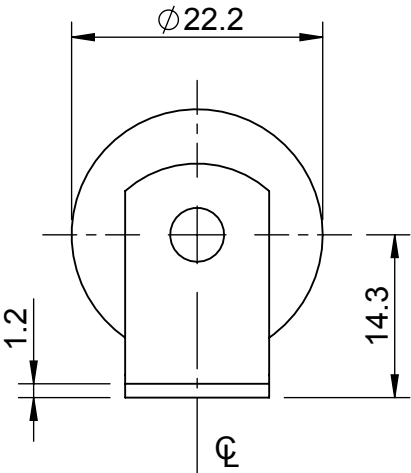
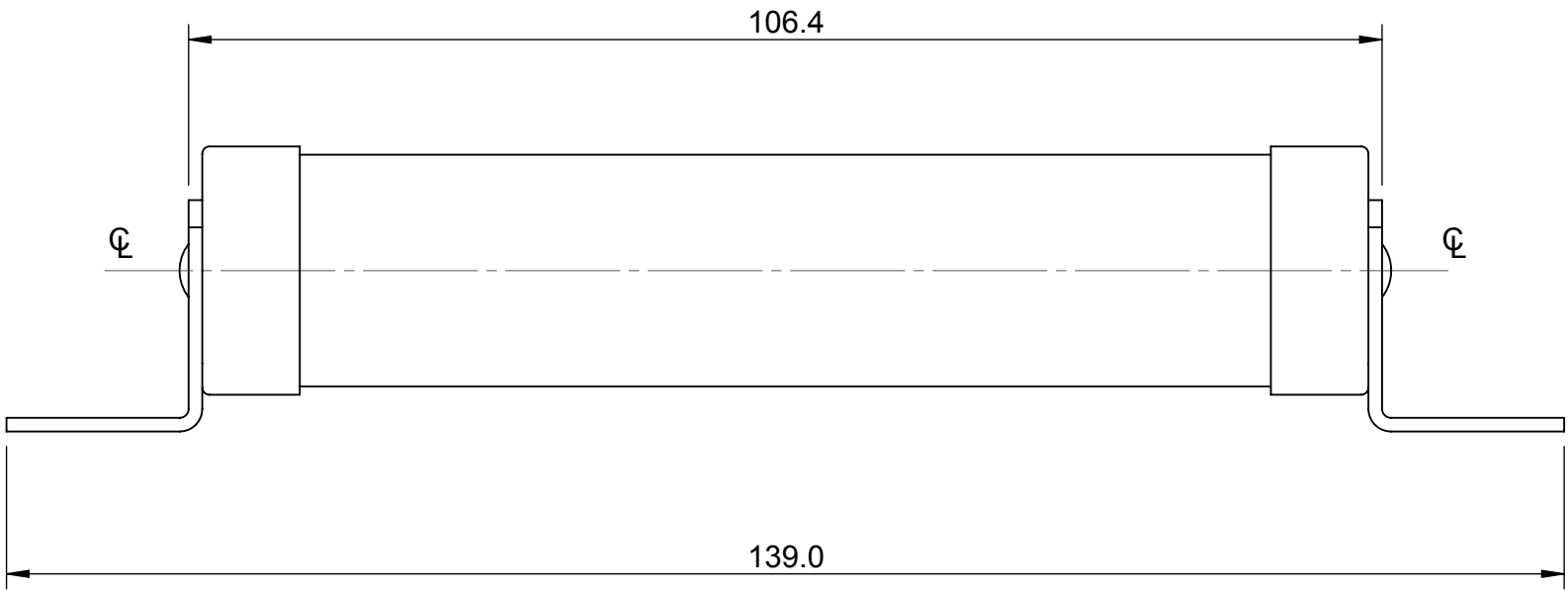
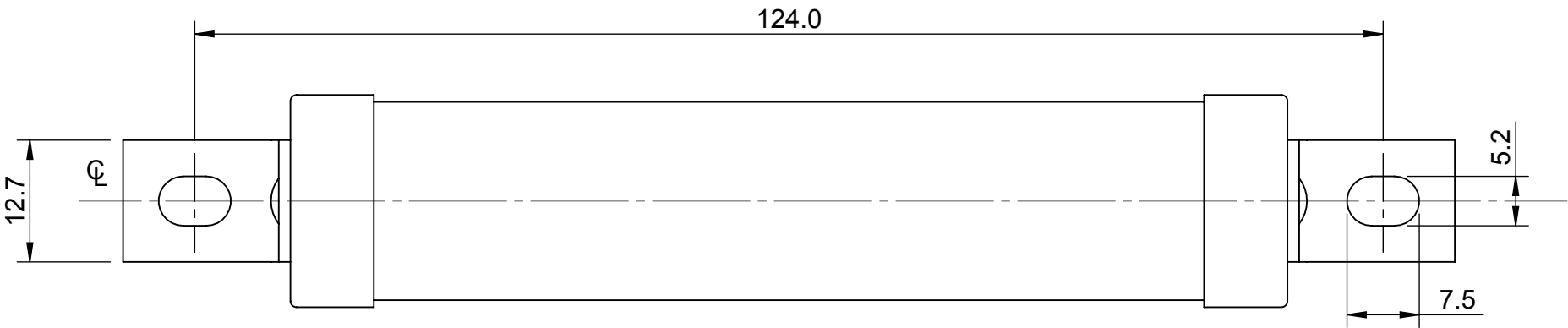


ITEM No. TAC--

REVISION				
REV	DESCRIPTION	BY	DATE	CHANGE NO.
A	CONVERSION OF GE LV FUSE DRAWINGS TO SOLIDWORKS	RAG	20/06/2012	B17258



SL . No	ITEM No
1	TAC2
2	TAC4
3	TAC6
4	TAC10
5	TAC16
6	TAC20
7	TAC25
8	TAC32

- NOTE :
- FOR TAG ALIGNMENT TOLERANCE REF SPEC. 5782504.

MODEL SOURCE FILE: 1000001975	MATERIAL:	UNLESS OTHERWISE SPECIFIED, ALL DIMENSIONS ARE IN MILLIMETERS. TOLERANCES UNLESS OTHERWISE SPECIFIED: GENERAL $\pm 0.4\text{mm}$ ANGULAR $\pm 1^\circ$ UNCONTROLLED COPY THIS DRAWING IS CONFIDENTIAL AND THE COPYRIGHT OF COOPER BUSSMANN AND MUST NOT BE COPIED OR PASSED ON TO A THIRD PARTY WITHOUT WRITTEN CONSENT	COOPER Bussmann (UK) Ltd Burton-on-the-Wolds, Leics, LE12 5TH Tel +44 1509 882 600 Fax +44 1509 882786			
	FINISH:		COOPER Bussmann			
	SURFACE AREA:		TITLE: OUTLINE FOR 'TAC' FUSELINKS (2 - 32 AMP)			
	VOLUME:		DWG NO: 1000001975		ANGLE: THIRD	REV: A
	MASS:		DRAWN BY: RAG	CHECKED BY: JM	DATE: 20/06/2012	SCALE: NTS

Mouser Electronics

Authorized Distributor

Click to View Pricing, Inventory, Delivery & Lifecycle Information:

Eaton:

[TAC4](#) [TAC10](#) [TAC16](#) [TAC20](#) [TAC32](#) [TAC6](#) [TAC25](#) [TAC2](#)