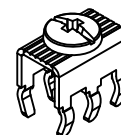


ACTUAL SIZE



10 mm

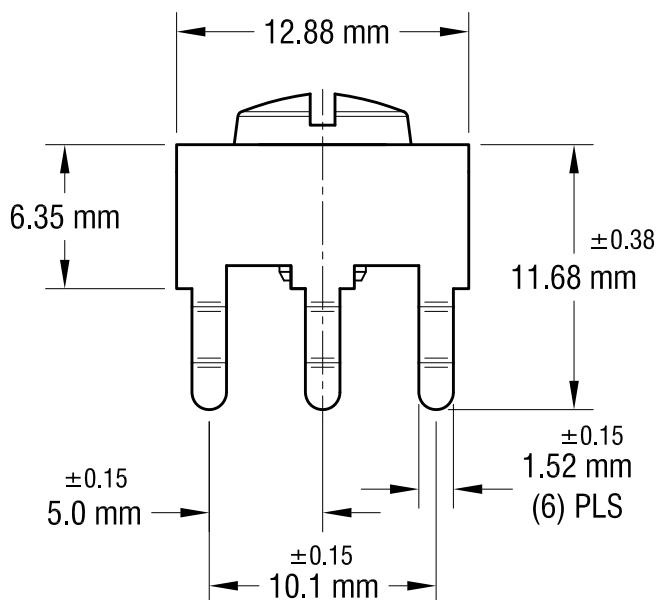
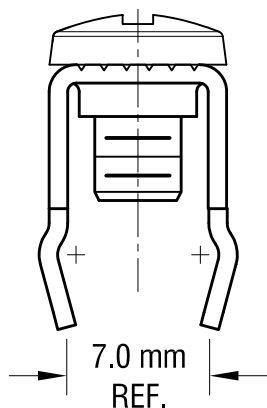
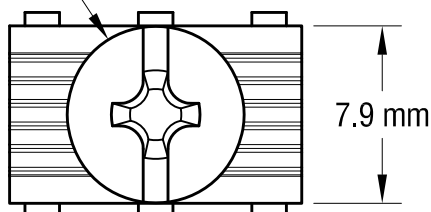
5.0 mm

7.0 mm

± 0.05
1.93 DIA. HOLE

(6) PLS

M4 x 6.00 mm L
CAPTIVATED SCREW



1.28.10	CHANGE AS PER ECN 10-007	C
9.30.09	CHANGE AS PER ECN 09-139	B
11.16.08	CHANGE AS PER ECN 08-182	A
DATE	DESCRIPTION	REV.

<h1>KEYSTONE ELECTRONICS CORP.</h1> <p>www.keyelco.com • NEW HYDE PARK, NY 11040 • Tel (516) 328-7500</p>			
PART NAME <h2>METRIC SCREW TERM.& CAPTIVE SCREW</h2>			
MATERIAL <h2>AS NOTED</h2>			
FINISH <h2>AS NOTED</h2>		DRN BY <h2>NT</h2>	DATE <h2>7.02.08</h2>
		APP'D <h2>LN</h2>	SCALE <h2>3X</h2>
TOLERANCES INCH [MM] DECIMAL \pm [± 0.25] ANGULAR $\pm 1^\circ$ UNLESS OTHERWISE SPECIFIED	CODE <h2>C</h2>	DWG NO. <h1>7800</h1>	

Mouser Electronics

Authorized Distributor

Click to View Pricing, Inventory, Delivery & Lifecycle Information:

[Keystone Electronics:](#)

[7800](#)